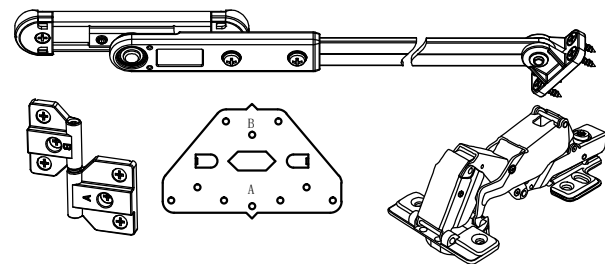
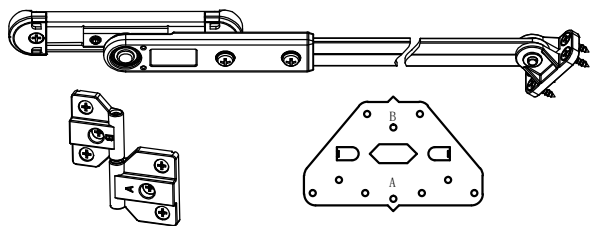
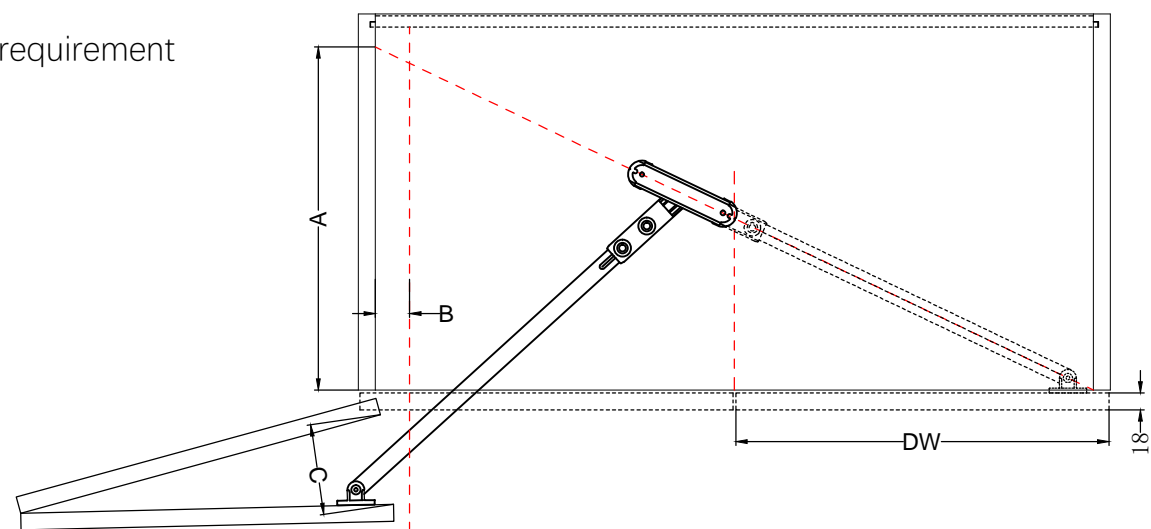


Without hinge

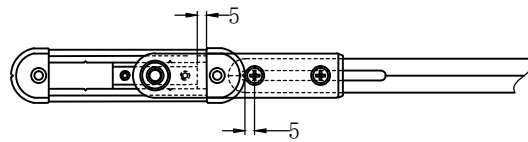
With hinge



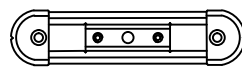
Cabinet requirement



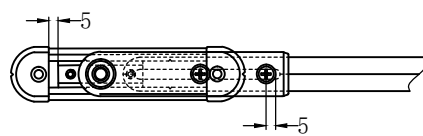
The longest status



The middle status

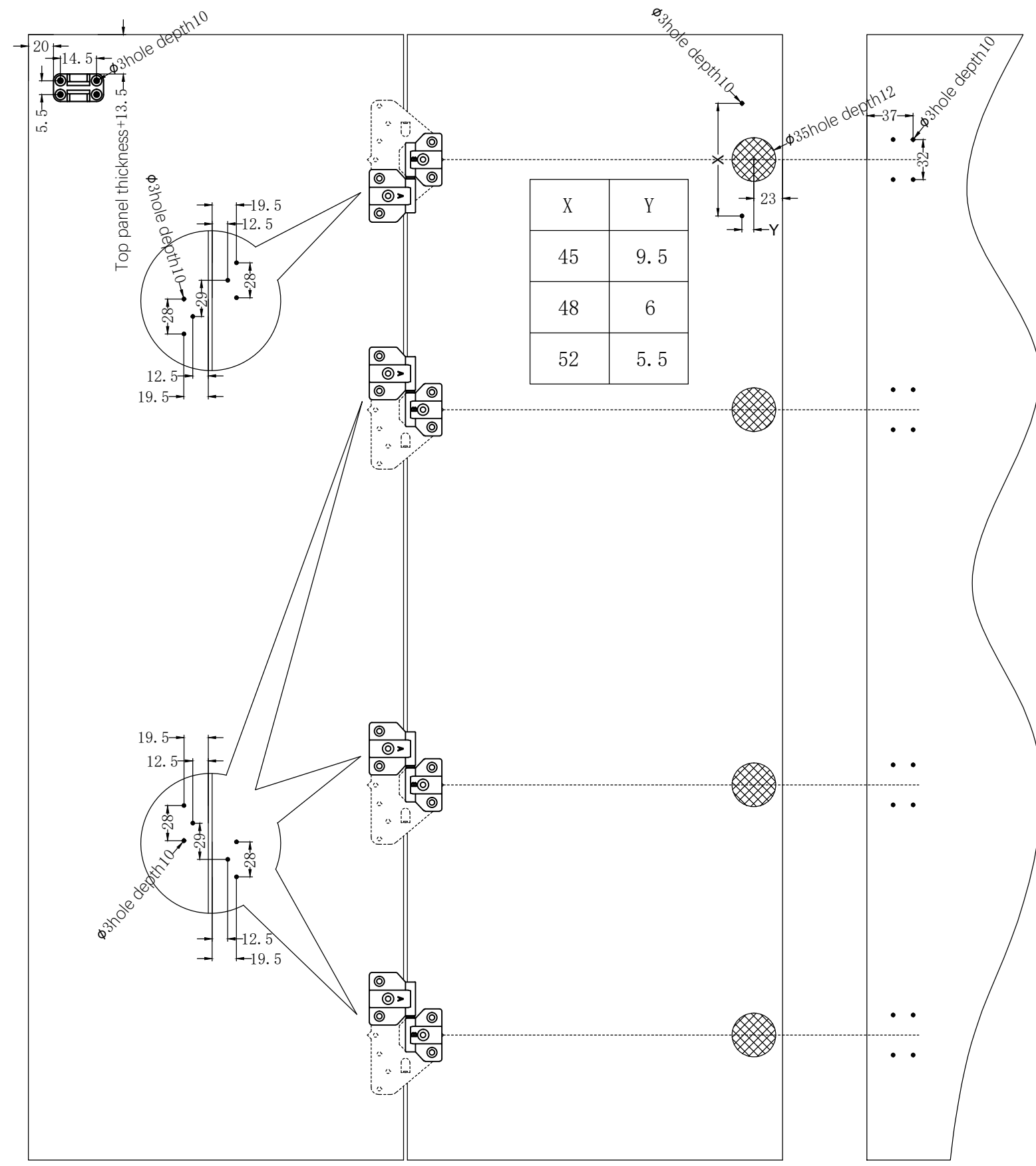


The shortest status



DW	Adjustable seat status	Guiding bar status	A	B	C	Door weight
300mm	The longest status	Firstly, slightly loosen the cross screw, and automatically adjust the telescopic length of the bar when the door closes. Then, Locking the cross screw.	550mm	55mm	35mm	12kg
350mm	The middle status		550mm	55mm	35mm	12kg
350mm	The middle status		465mm	45mm	40mm	12kg
400mm	The shortest status		465mm	50mm	35mm	12kg

Door requirements



opk Sailing 2		Name: Sailing 2	
Creator: LXJ		Ratio/Verhältnis:	Format
Application for folding wooden door. Product applications: Wardrobe, Cabinets, File cabinets. Door height installation is adjustable.		1:1	A3
		Date/Datum: 11/12/20	Page / Seite: 1/1

We reserve the right to make changes. No responsibility is accepted.