

# JUNIOR-6

## Sliding doors systems

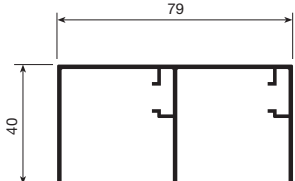


## 1 JUNIOR-6 SLIDING DOORS SYSTEMS

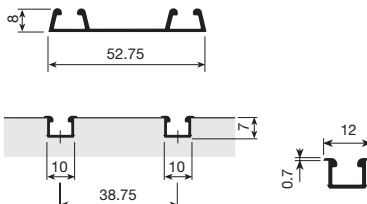
### JUNIOR-6 INDAmatic

Improved, even smoother runners, thanks to their lower bearings and their triple running points which prevent unwanted door movement. But above all it is known for its automatic and cushioned gradual soft closing.

#### Dual upper track.

INDAmatic	4.2m profiles	6.1m profiles	
Silver-anodised	715.542.100	715.561.103	
Matt silver-anodised	715.542.516	715.561.512	
Brass-anodised	715.542.785	715.561.781	
Black-anodised	715.542.892	715.561.895	
Gold-anodised	715.542.774	715.561.770	
White-lacquered RAL 9010	715.542.800	715.561.803	
Lacquered iron	715.542.203		
Lacquered oxide	715.542.645		

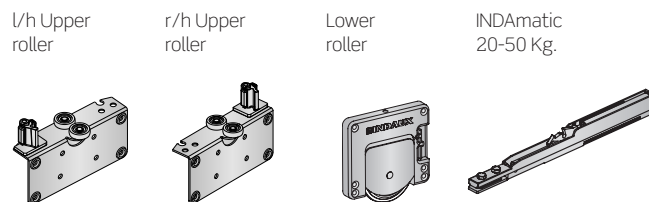
#### Lower track.

	4.2 m profiles		6.1 m profiles		
	Single*	Dual	Single*	Dual	
Silver-anodised	714.342.101	714.242.104	714.361.104	714.261.100	
Matt silver-anodised	714.342.510	714.242.513		714.261.516	
Brass-anodised	714.342.786	714.242.782		714.261.785	
Black-anodised	714.342.893	714.242.896		714.261.892	
Gold-anodised	714.342.775	714.242.771		714.261.774	
White-lacquered	714.342.801	714.242.804		714.261.800	
Lacquered iron	714.342.204	714.242.200	714.361.200		
Lacquered oxide		714.242.642			

#### Bag of components for 2 doors with INDAmatic

Without bearing	704.402.101	5
With bearing	704.472.101	

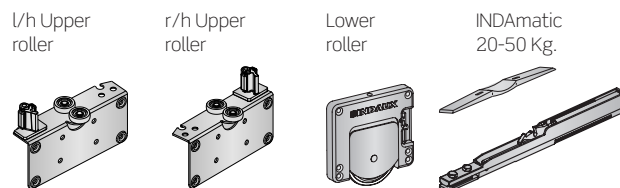
Each reference consists of 4 standard INDAmatic devices.



#### Bag of components for 3 doors with INDAmatic

Without bearing	704.403.103	5
With bearing	704.473.103	

Each reference consists of 6 upper rollers (3 right and 3 left), 6 lower rollers, 1 door positioner and 4 INDAmatic devices.

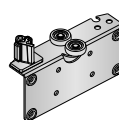


### Bag of components for 2 doors.

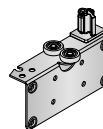
Without bearing	704.412.030	5
With bearing	704.452.033	

Each reference consists of 4 upper rollers (2 right and 2 left) and 4 lower rollers.

l/h Upper roller



r/h Upper roller



Lower roller

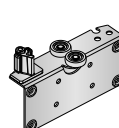


### Bag of components for 3 doors.

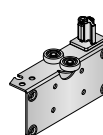
Without bearing	704.413.032	5
With bearing	704.453.035	

Each reference consists of 6 upper rollers (3 right y 3 left), 6 lower rollers and 1 door positioner.

l/h Upper roller



r/h Upper roller



Lower roller



Door positioner



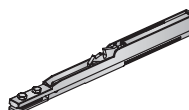
### INDAmatic standard kit

INDAmatic

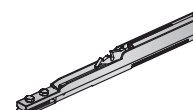
Up to 15 Kg	20-50 Kg.	100
197.341.104	197.346.100	

Each reference consists of 2 standard INDAmatic devices.

INDAmatic up to 15 Kg.



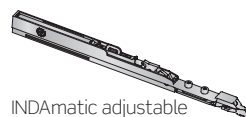
INDAmatic 20-50 Kg.



### INDAmatic adjustable kit.

197.350.101	10

Each reference consists of 2 adjustable INDAmatic devices, 2 springs and 2 adjustable fixing triggers



INDAmatic adjustable



Spring

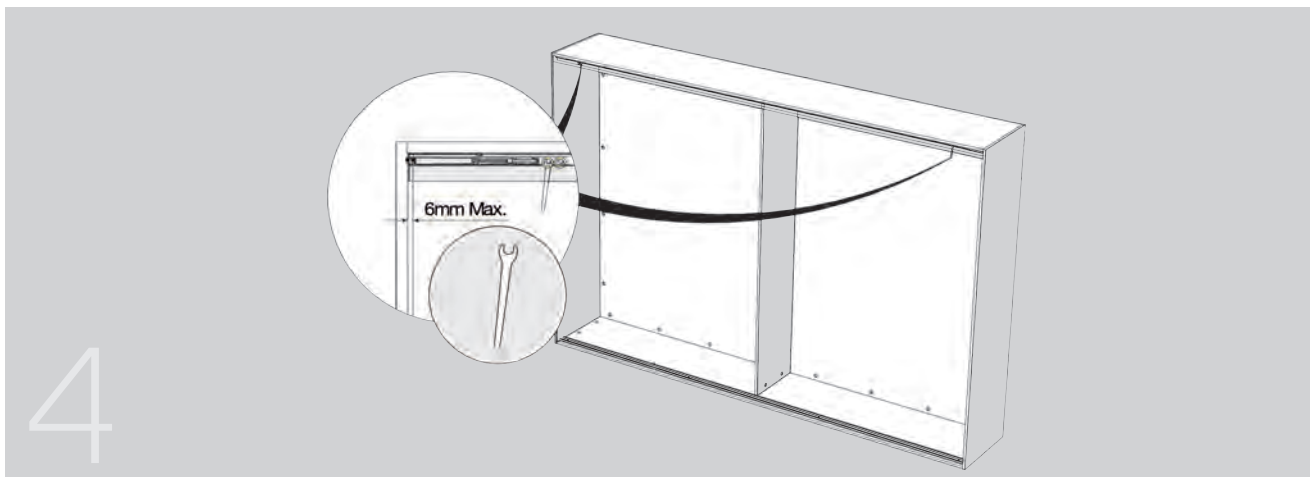
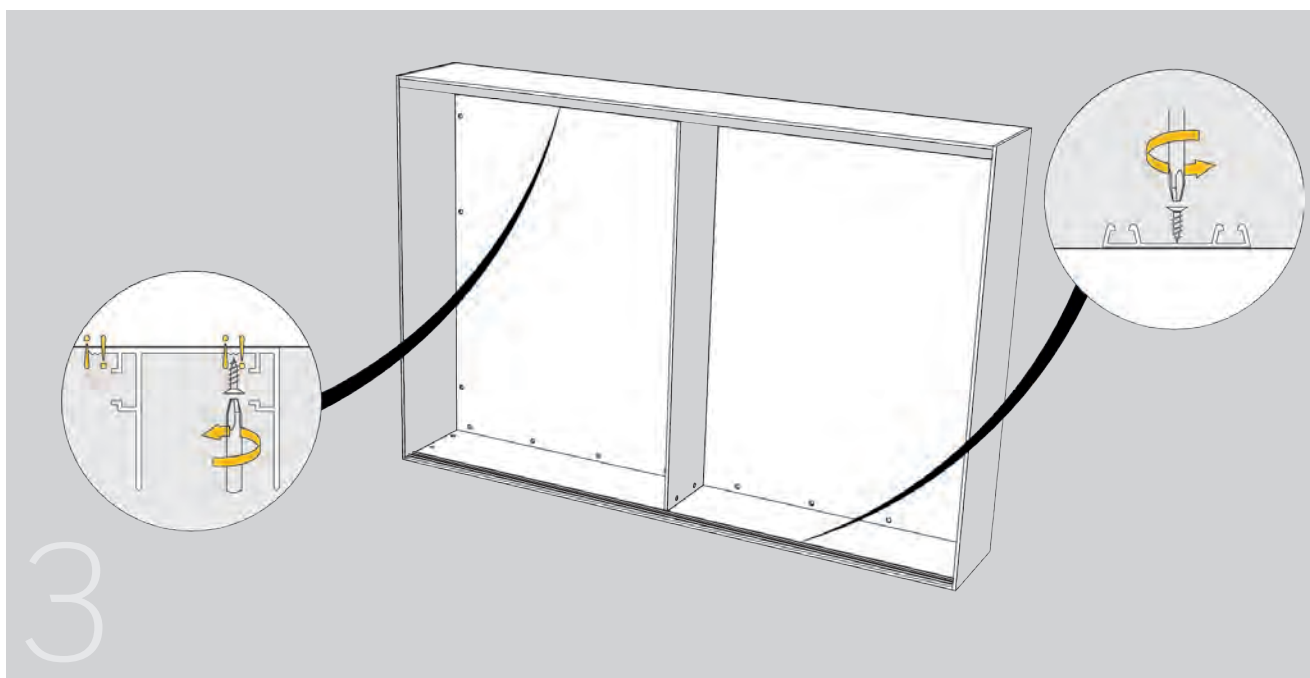
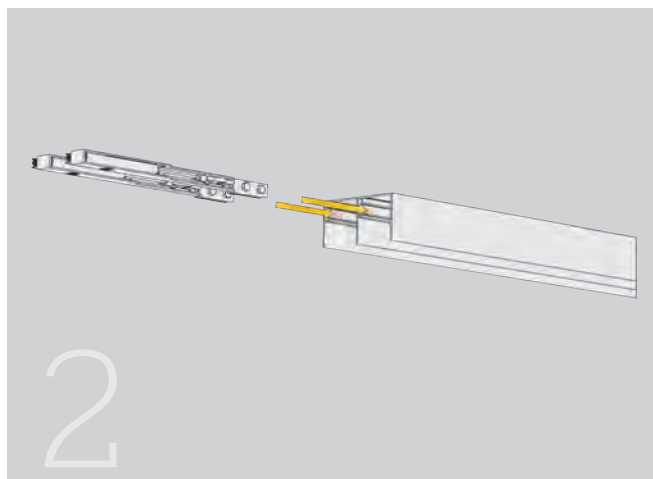
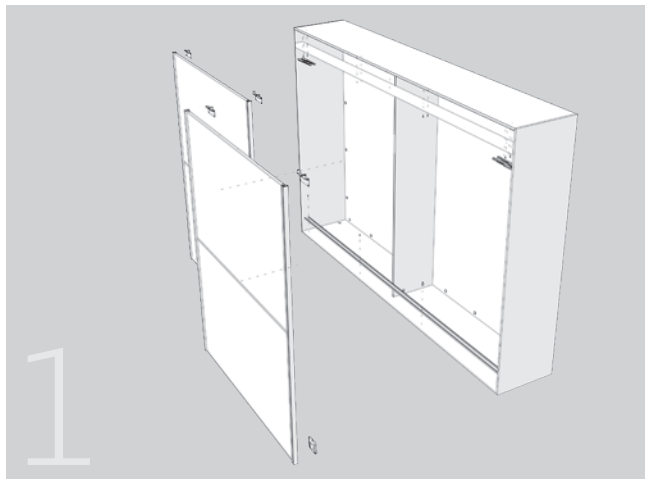


Fixing trigger

JUNIOR-6 INDAmatic standard

INDAmatic standard assembly

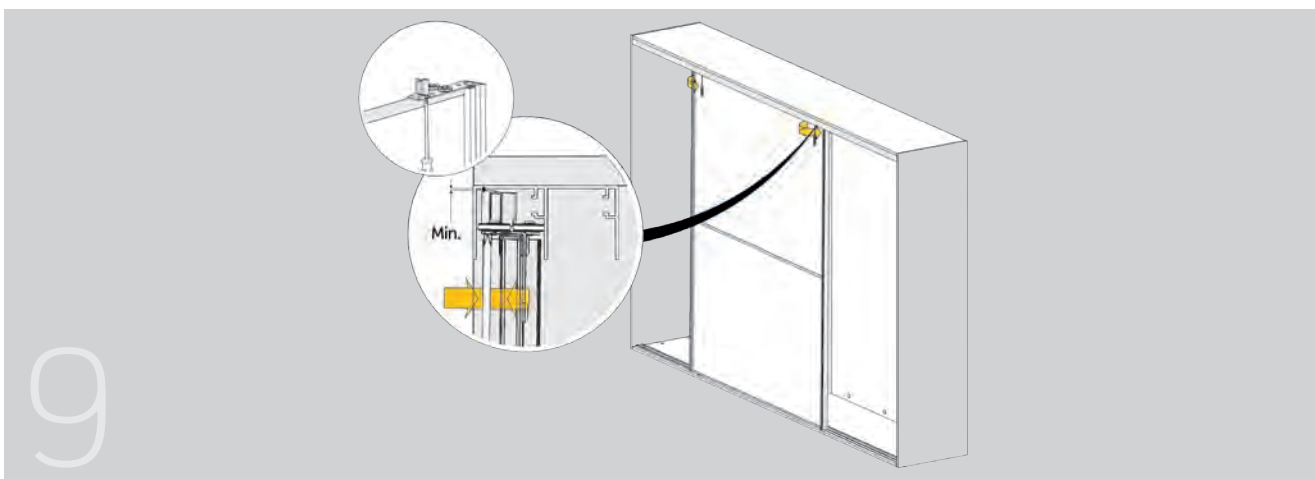
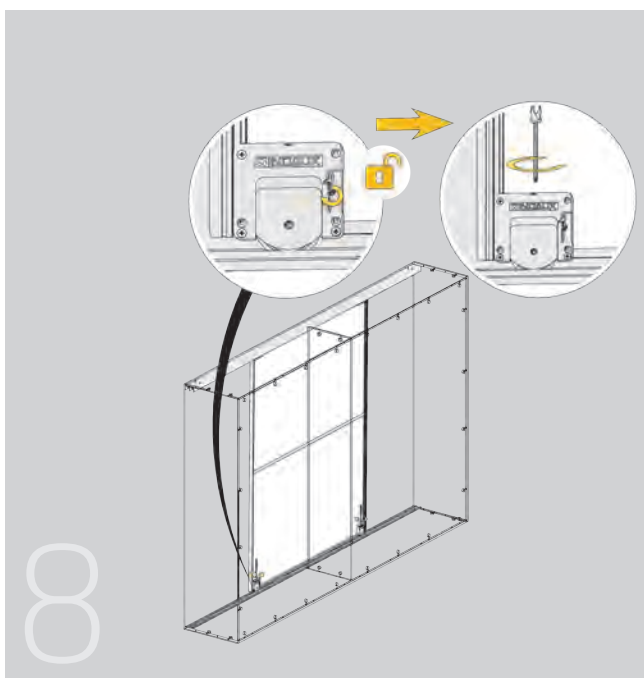
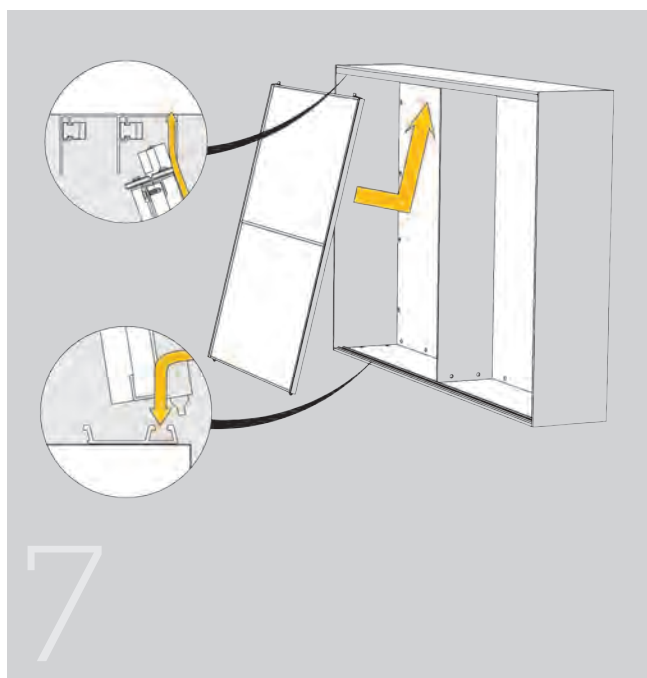
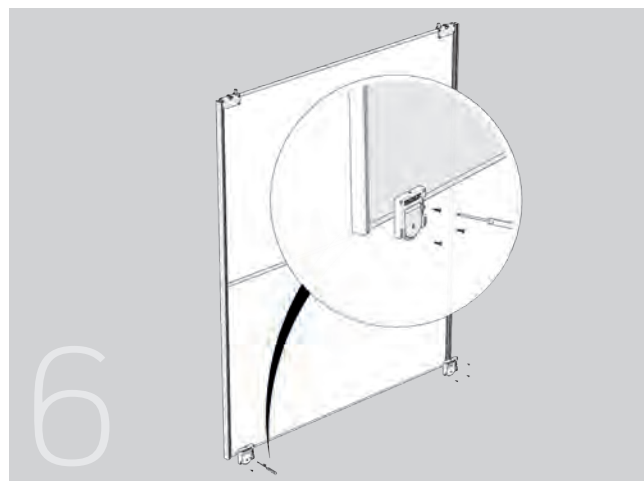
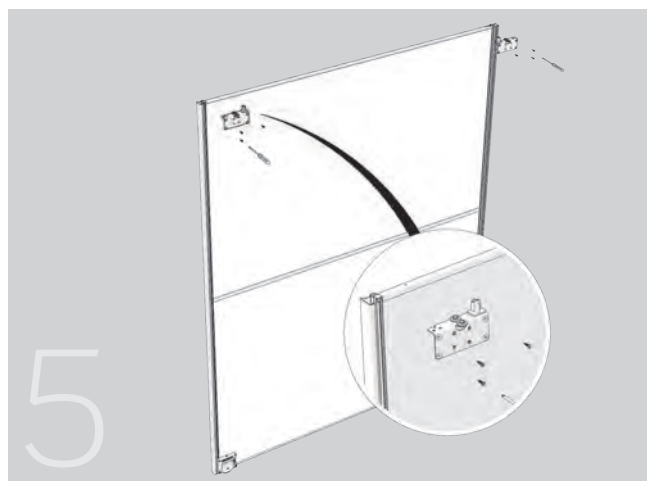
INDAmatic



JUNIOR-6 INDAmatic standard

INDAmatic standard assembly

INDAmatic

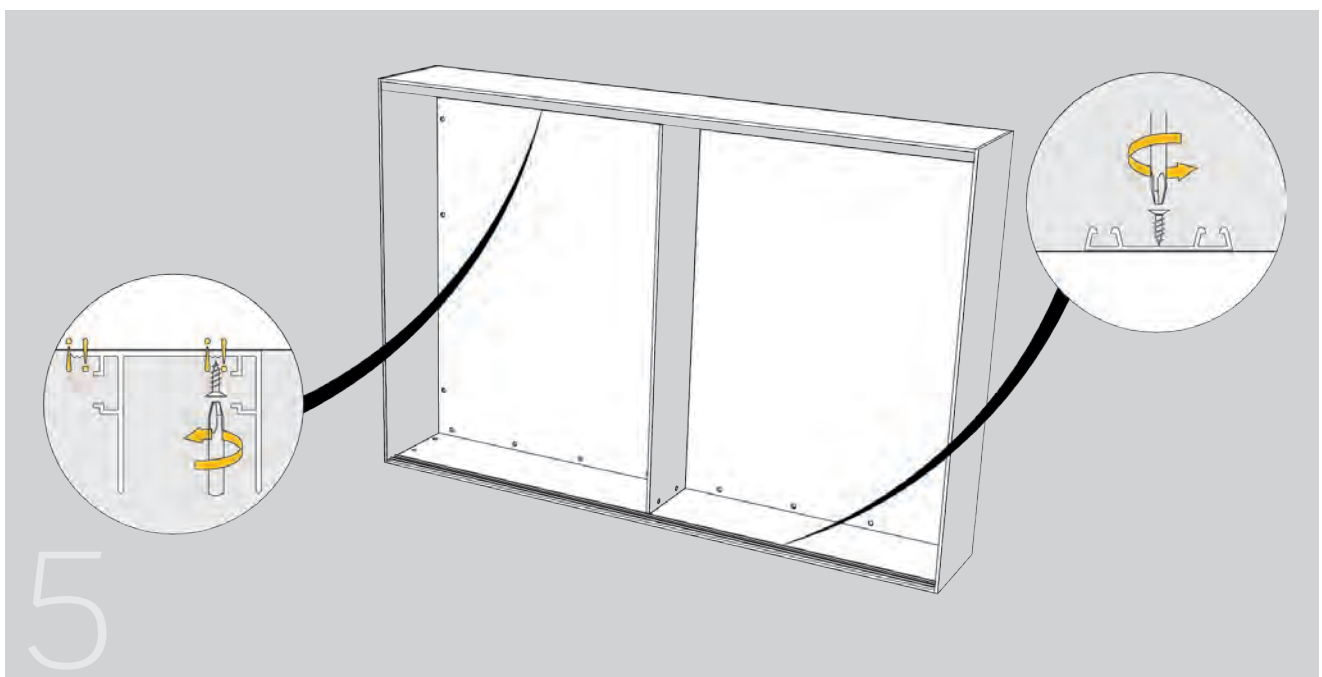
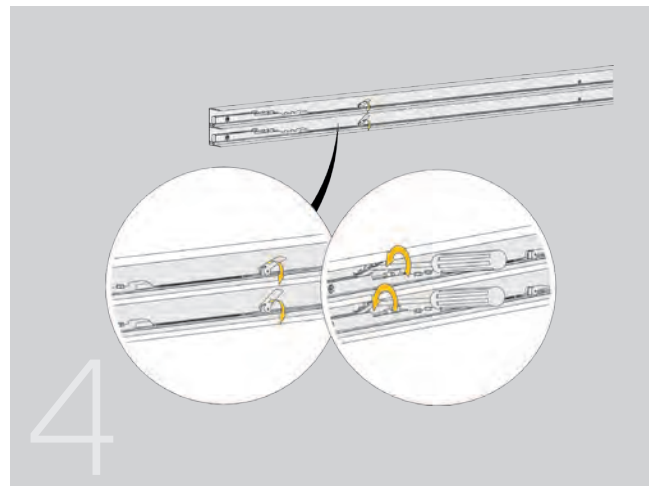
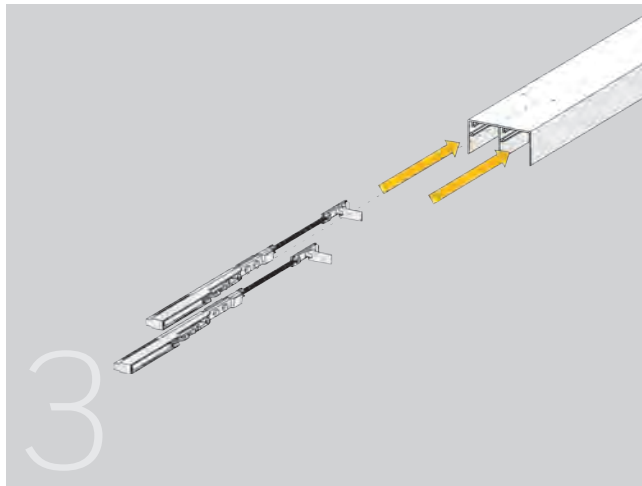
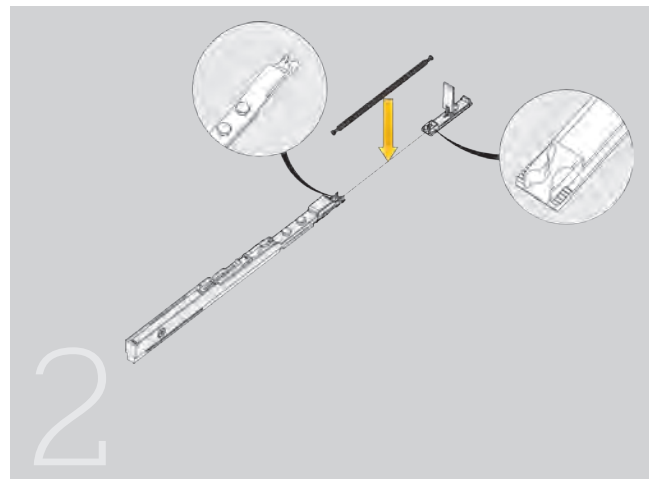
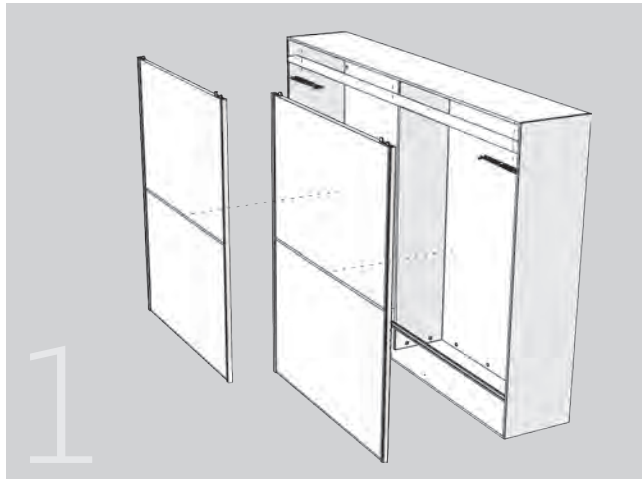




JUNIOR-6 INDAmatic adjustable

INDAmatic adjustable assembly

INDAmatic



JUNIOR-6 INDAmatic adjustable

INDAmatic adjustable assembly

INDAmatic

